

香港失明人互聯會
Hong Kong Federation of the Blind



本會網站



捐款支持視障社群



轉數快



PayMe



香港失明人互聯會

九龍觀塘順緻街2號順利社區中心地下

電話 23435363

傳真 27907765

電郵 info@hkfb.org.hk

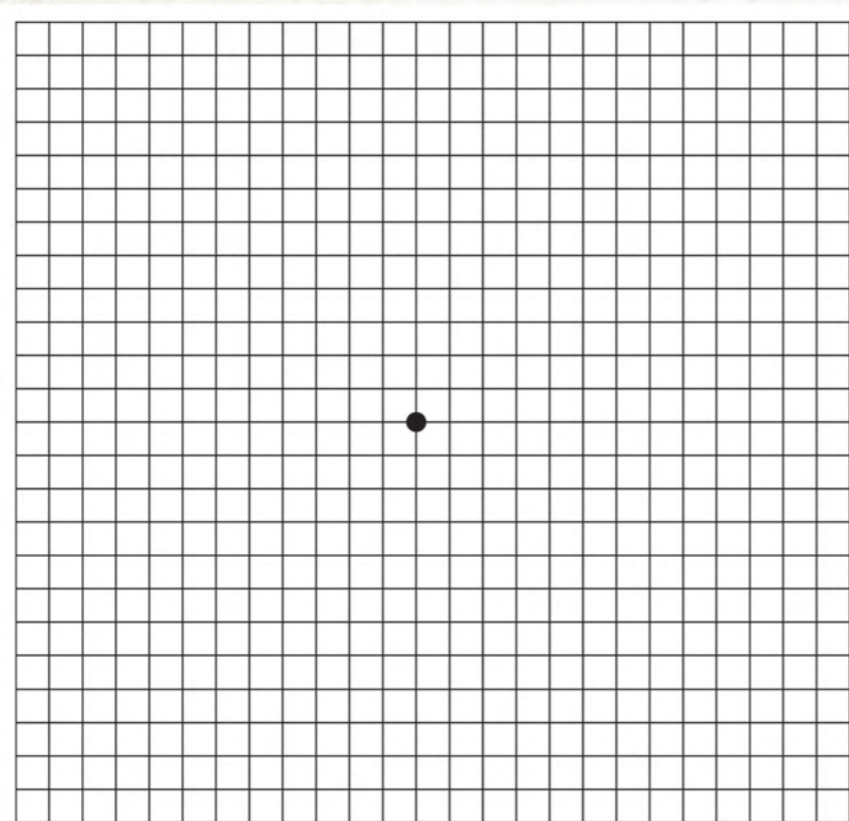


目錄

黃班點病變自我檢測	1
梁裕龍醫生護眼小貼士	2
主席序言	3 – 4
失明夫婦照顧暖流	5 – 8
本會簡介	9 – 11
統計資料	12 – 13
活動相片	14
伴我同創光明路：新失明人士服務	15 – 16
沙爾德聖保祿女修會慈善基金：驗眼計劃	17
智能手機(支付寶、HAGO)	18
殘疾家庭向上游：親子服務	19 – 20
假日贈暖意：地區獨居人士關懷計劃	21 – 25
視障獨居長者家居服務	26
結伴同行夫婦組	27
WeTV無障礙媒體	28
賣旗花絮、鳴謝單位	29 – 30
鳴謝	31
儲備預算	32
獨立核數師報告	33 – 40
財務報表	41



黃班點病變自我檢測



步驟

- 1 在適當的光線下，把方格表放於視平線28-30厘米之距離
- 2 先把一隻眼覆蓋，另一隻眼注視黑點。若看見曲線或直線中斷，可能患上濕性黃斑病變，請儘早求醫
- 3 重複檢查另一隻眼

梁裕龍醫生護眼小貼士

- ★ 保持良好血管很重要
 - 不要三高：血壓、血糖、血脂不要高
 - 不要睡眠窒息症
 - 不煙不酒
- ★ 堅持定期覆查，見一見醫生護士，至少可清楚現時病況
- ★ 20/20/20防止眼睛疲勞方法：
 - 每20分鐘 休息20秒 看20英尺外的東西
- ★ 減少看屏幕時間，藍光傷眼





主席序言

雨後天晴 自強不息



經過三年的疫情挑戰，自2022年5月起，本會的服務已逐步恢復正常。在過去一年中，我們的服務數據不跌反升。上一個財政年度，我們共服務了8,438名視障人士和2,225名健視人士，舉辦了達482項活動；在2023至2024財政年度的上半年，我們已經完成了社會福利署設定的全年服務目標。疫情後全面恢復讓我們的工作變得更加全面和細緻。我們在疫情期間開展的新服務，如照顧多重殘疾的獨居長者、線上講故事、智能手機諮詢站，以及視障夫婦互助小組等，都持續取得進展。

作為一個視障組織，我們除了確保會員快樂參與，還設定了兩個新的發展目標：首先加強知識性活動的元素，不僅讓會員在參與中得到樂趣，同時在知識層面實現「質」的提升，例如我們目前嘗試的線上戲劇和歷史講座，旨在鼓勵會員適應網絡新常態，同時深化對歷史和文化的了解；其次，我們致力推動全民運動復康理念，使視障朋友能夠獨立鍛鍊身體。我們已有十年視障功夫和瑜伽教學經驗，現設計了適合視障朋友的功夫八式和瑜伽九式，專門針對膝部、腰部和頸部的強化運動。透過實踐工作坊和視訊語音筆記，即使會員未能參加每周的訓練班，也能在家中進行定期運動，從而加強體能，延緩身體機能衰退。

去年9月，本會舉行了第27屆執行委員會選舉，我很榮幸再次被選為主席。在此，我要感謝所有會員的支持，並歡迎兩位新加入執行委員會的委員，馮錦華先生和司徒鳳仙女士。執委會代表了視障會員的意見，我們期待大家的建議，使我們的工作更符合視障社群的利益。同時我也要感謝兩位今屆離任的委員 – 王溢皓先生和黃鎮樑先生，感謝他們過去的辛勤付出，祝福他們生活愉快、健康安康。

未來的道路仍充滿挑戰，經濟下滑和政府資源削減是可以預見的困難。但本會已準備好積極應對這些挑戰，未來兩年，我們將會繼續增加對會員及其家屬的服務，絕不減少資源投放。明年5月11日是我們在港島區的賣旗籌款日，我呼籲大家踴躍參與，支持我們的服務。最後，祝大家新年進步，萬事如意，龍年行好運！



鄧光寶 先生

香港失明人互聯會
第二十七屆執行委員會主席



失明夫婦照顧暖流

龍哥龍嫂的患難與共

甄偉龍太太（龍嫂）自述

17歲的我遇上21歲的他，繼而相識、相交、相知、相愛；25歲的我與29歲的他結合，接著相守、相伴至今，38載的日子過去了，迎來39周年。

婚姻得來不易，曾四改婚期，歷盡艱辛，我們能不珍惜嗎？婚後我們迎來兩個孩子，一家四口生活簡單而溫馨。事業上我們各有所忙，也略有所成。孩子的學業成績引以為傲，2001年，孩子們赴英求學。我們家庭與一般家庭一樣，供樓、供養父母、栽培孩子成材，一切平淡而美好，從不知厄運悄然而至。

2003年 SARS驟至，整個香港經濟跌落谷底。裁員、減薪、公司倒閉，比比皆是，偉龍的公司也不能倖免。當我們正彷徨家庭經濟時，他突然右眼黃斑出血，瞬間失去視力，卻無藥可治。只能進行一次又一次的手術，去作保守治療，制止眼底出血而已。

外在的壓力

我們面對沉重的經濟壓力，收入驟減，住房按揭要還；曾踏遍各大銀行，希望加按樓宇，奈何支不抵償；出售房子呢？無人問津，偉龍龐大的醫療開支不能少，孩子的教育不能斷，父母必須要供養。

內在的壓力

偉龍的病不可輕視，縱使斷為無藥可治，我們仍千方百計找尋良方，同時也要兼顧他的情緒。

那時的我只能告訴自己必須堅強。我同時保持緘默，不敢告訴長輩也不能告訴孩子，怕他們擔心難過，也覺他們無能為力。我連哭的資格也失去，怕偉龍知道心裡難受，影響情緒。真忍不住時，也只能偷偷地、壓抑地流淚。



心理醫生的教導

一位女士去見心理醫生，當她說完她的故事後，醫生只問她：如果世上有兩條隊，一條是幸運的，一條是不幸的，妳認為自己排在哪一隊？那女士聽後，一下子心裏就怪責起醫生，我已在痛苦中，還用說？當然是排在不幸的隊中。醫生接著問：「那妳排在隊頭，隊尾還是隊中央？」那女士就想：「隊尾不至於吧，世上有經歷戰亂，妻離子散，天災人禍，大有人在，我充其量只身處不幸的隊中央。」醫生繼續說：「回家後做課業，每天寫下十件令妳開心的事，也寫下原因，一星期後再回來見我」，女士就回家去。一天下來，寫不上；兩天下來，同樣寫不上；踏入第三天，她心想：多多少少也要寫下，不然面子掛不住。她坐下想想，剛好吃了一個柳丁(橙)，發現柳丁居然甜美可口，她終於寫下第一件令她開心的事，「柳丁很甜，我輕輕笑了，理由是柳丁甜美，被我選上，也被我吃上，值得開心一下」。接著她望向窗外，陽光普照，但有涼風吹入，她心情豁然開朗，寫下第二件開心的事。她終於發現開心可以好簡單，只要留意周遭的一切，將要求稍稍降低，不難找出令人開懷的事，即使這事只一笑而過，也能令人心情放鬆。一星期過後，她拿著功課去見醫生，醫生看完作業接著就問她：「妳現在排在隊的什麼位置？」她笑著對醫生說：「我今天排在不幸的隊頭！」看到這裏，相信大家都猜到那女士就是我。

面對困境

堅強不僅靠信念，還需心理和生理的健康。我坦誠地與家人分享了這一切，與偉龍共同面對我們的困境。偉龍盡力配合治療，努力適應視障後的生活，同樣肩負起家庭經濟的責任。我們生活的質素大不如前，總有點狹路求生的感覺，但生活的享受其實並不重要，重要是我們能攜手面對人生路上不同的起起落落。

感恩他選擇了我，我也選擇了他。感恩能一同經歷這一切，感恩能一起努力地付出，感恩能苦心經營一段婚姻。一生的日子其實不多，珍惜就好了。



失明夫婦照顧暖流

劉潤連夫妻相處心得



潤連與丈夫盧生於1984年在一次船上派對上相識。在船上潤連的一個微小舉動 – 幫忙清理派對現場，深深打動了盧生。盧生認為潤連是一個細心體貼的好女孩，於是決定追求她。

交往六年，他們特意選擇在船上舉辦訂婚派對；第七年結婚，育有一女。患有夜盲症的潤連由2016年開始眼睛轉差。盧生知道後便吩咐潤連只需分擔少量的家務，但也不會與她搶著家務做，不希望她在家庭中的自我存在感減少。盧生則負責大部分日常生活事務，陪伴潤連成為她的同行者。

在潤連失明的初期，盧生有些不習慣，例如在與失明者交流時欠缺適當的方式。他經常說「睇住，睇住，嚟呢邊啦，放咗係嗰邊呀」，而不懂得運用時鐘方位來描述方向和距離，因此常有誤解和迷惘，但盧生堅信能與太太一起克服未來的各種生活挑戰。在潤連患病初期，她時常會獨自傷心流淚，盧生仍耐心開解潤連。

潤連回憶說：「老公最初不懂帶失明人士出街，我們在深水埗隧道跌落樓梯，幸好當時是寒冷的冬天，隔着厚厚的衣服，我們倆人站起來那一刻所顧及的都不是自己，而是關心另一半有否受傷跌痛，回想起好感動。」

她還想起初失明時，在旺角東地鐵站跌落空隙的驚險經歷：「我當時未習慣用白杖出街，與老公外出坐火車，老公當時說：『跳過去』，我便輕輕一跳，竟意外跌落了列車與月台之間的空隙，整隻腳被卡住，幸有途人見狀幫忙把我拉回列車上。這件事令我從此蒙上陰影，即使到現在，老公說要跳或需要大步跨過，我亦會用白杖掃下，以策安全。」

盧生表示：「現在太太用白杖出門，我感到更安心，不需要在乎外人的目光。」

潤連說：「我不確定現在的生活是好還是壞，因為現在會常常與丈夫結伴四周走走，相處時間多了、磨擦自然會多，但兩公婆最緊要是沒有隔夜仇。」

盧生補充說：「我覺得自我退休後，與太太的感情更好，我們變得更同步。如果不是一起出門，我會更擔心她的安全。」

潤連坦言：「如果是我丈夫失明，我可能無法像他那樣體貼入微地照顧他。」

這對夫妻相互分享生活中的點滴，互相鼓勵，保持正面態度，享受每一天。

羅裕根太太的分享

大家好，我是羅裕根太太。我先生患上視網膜色素病變，這眼病令他雙眼慢慢退化、視野越來越差。但感恩的是我們有一段較長的時間去接受和適應。

我先生大約在30歲發病，最初我也感覺不到有什麼不同。直至數年後的一天，我們回到家，我叫他快點開門，因為一直都是他負責開門，但他回答我看不清楚鎖匙位置，快不了。這時我才頓覺他眼睛的情況差了很多，已經影響到我們的日常生活。

到了次子出生又遇到一個大衝擊，他所屬的工作部門要求他提早退休，家庭收入固然大減，我更擔心先生是否適應到，所以當時的壓力很大。幸好先生適應得不錯，在家裡陪兒子，而且兩個兒子都很懂事、幫忙照顧爸爸，令我可以安心工作。

後來先生的眼睛越來越差、情緒時好時壞。這時先生的姐姐，鼓勵他去報讀視障機構的訓練課程，學習日常生活技巧，更認識了一班視障朋友。他們帶我先生去不同的視障機構參與活動，令他開朗了不少，我也可以放心下來。

回想先生發病至今，確實經歷了很多壓力、困難和擔憂，但亦令我成長不少，讓我更了解作為照顧者的需要、更懂得體諒別人。我退休後有更加多時間可陪伴我先生，亦在一些視障團體幫手做義工。人生總會遇到一些困難，但只要積極面對，總會有找到出路！



本會宗旨及目標

香港失明人互聯會（以下簡稱互聯會）是由失明人士自組之非牟利志願福利機構，正式註冊成立於一九七二年，立會宗旨為：

- ◆ 發揮自助互助的精神，團結全港失明人士，鼓勵積極人生。
- ◆ 倡議以平等為原則，共融為基礎，聯合各視障人士，爭取在教育、工作及社會待遇上享有平等參與之機會。
- ◆ 謀求增進及改善本會會員之福利。
- ◆ 聯絡外地失明朋友及有關團體，共謀福祉。

服務對象

- ◆ 本港失明人士及其家屬
- ◆ 海外失明朋友
- ◆ 全港市民（主要為公眾宣傳對象）

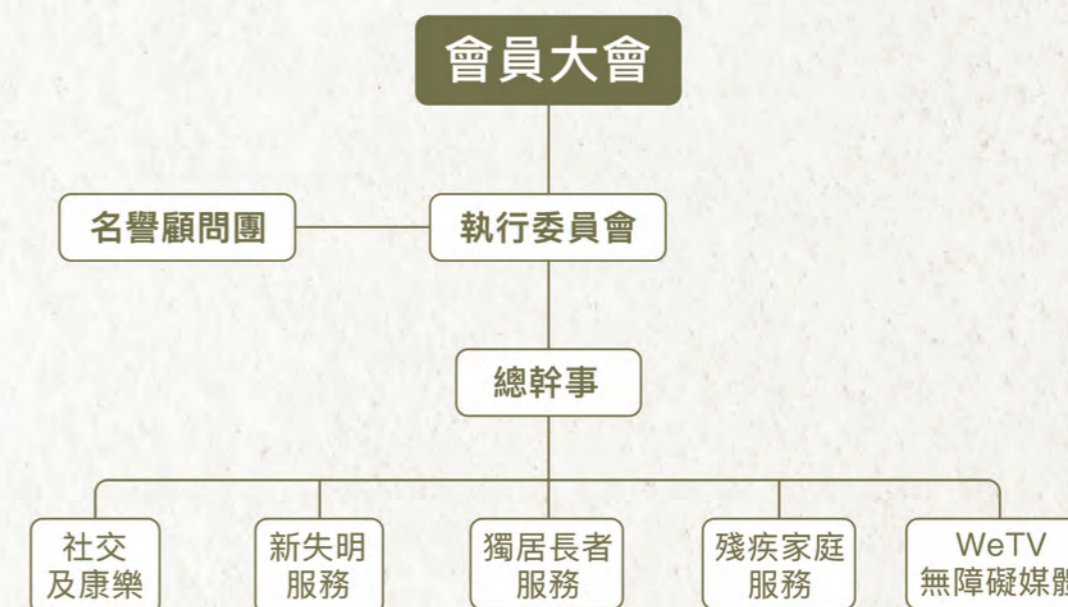
入會資格

凡視障人士，不論其性別及年齡，皆可向本會申請成為會員，申請被接納後，祇需繳交基金及年費，便可成為基本會員。此外，本會會員的親屬、義工和捐助者，均可申請成為贊助會員。

退會手續

凡視障會員親臨或致電本會，核對資料後便可退會。
凡欠交逾兩年會費者，便自動退會。

組織架構



名譽顧問團名單（排名不分先後）

- | | |
|-------------------------------|-------------------|
| ◆ 梁愛詩女士（本會法律顧問） | ◆ 馮健華先生（本會法律顧問） |
| ◆ 王學今律師（本會法律顧問） | ◆ 楊榮新醫生（本會眼科顧問） |
| ◆ 梁志文先生 杰文實業有限公司董事 | ◆ 馮天樂博士（中國歷史文化顧問） |
| ◆ 陳承斌先生 柏福服飾有限公司董事 | ◆ 尹馥玲女士 |
| ◆ 尹馥玲女士 | ◆ 張超雄博士 |
| ◆ 英國皇家海外友好協會
前香港分會創辦會長保羅斯迪 | ◆ 羅德榮先生 |
| | ◆ 資深復康工作者袁志海先生 |



第二十七屆執行委員名單

(2023年9月1日至2025年8月31日)

主席	鄧光寶先生
副主席	唐蓮娜女士
司庫	甄偉龍先生
第三名銀行帳戶簽署人	袁瑞琪先生
內務秘書	楊惠貞女士
外務秘書	郭巧玲女士
執行委員	司徒鳳仙女士、陳樹春先生、郭馮英女士、趙小紅女士、劉潤連女士、袁瑞琪先生、劉發先生、馮錦華先生

人事委員會成員	主席：鄧光寶先生 副主席：唐蓮娜女士、甄偉龍先生 委員：郭巧玲女士、唐蓮娜女士
---------	---

管理委員會	主席：鄧光寶先生 副主席：唐蓮娜女士 財政：甄偉龍先生 委員：馮錦華先生、袁瑞琪先生、趙小紅女士、司徒鳳仙女士
-------	--

籌款委員會	組長：唐蓮娜女士 組員：陳樹春先生、劉發先生
-------	---------------------------

康樂組	組長：司徒鳳仙女士 組員：郭巧玲女士、馮錦華先生
-----	-----------------------------

服務行動組	組長：袁瑞琪先生 組員：甄偉龍先生、郭巧玲女士
-------	----------------------------

長菁組	組長：郭馮英女士 組員：趙小紅女士、唐蓮娜女士
-----	----------------------------

愛心關懷組	組長：馮錦華先生 組員：陳樹春先生、司徒鳳仙女士
-------	-----------------------------

職員表

(截止2023年12月12日更新)

總幹事	盛李廉先生	高級活動幹事	王健邦先生
行政經理	李絲鴛女士	活動幹事	譚浩輝先生
會計主任	梁穎儀女士	WeTV顧問	周荻恩女士
社會工作統籌	朱麗嫦女士	WeTV監制	蔡梓康先生
社會工作員	陳妙加小姐	WeTV編導	陳家俊先生
社會工作員	施旖旎小姐	維修技工	蕭永楷先生
社會工作員	何海燕小姐	兼職事務員	李華英女士
復康教育專員	吳家麟先生		

2022-23年度總服務人次

- ◆ 視障人次：8,438 人次
- ◆ 健視人次：2,225 人次

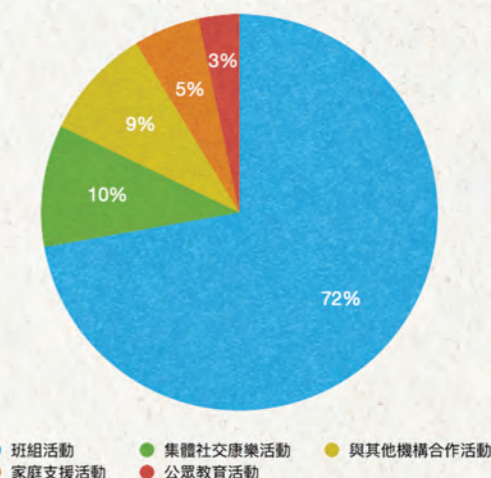
會員服務

- ◆ 新近失明個案訓練：230 次
- ◆ 獨居長者家居探訪及檢查：51 次
- ◆ 獨居長者家居維修：146 次

本年度總活動項數

總活動項數：482項

- ◆ 班組活動 348次
 - ◆ 集體社交康樂活動 48次
 - ◆ 與其他機構合作活動 44次
 - ◆ 家庭支援活動 26次
 - ◆ 公眾教育活動 16次
- (其中屬發展性活動 180 次)

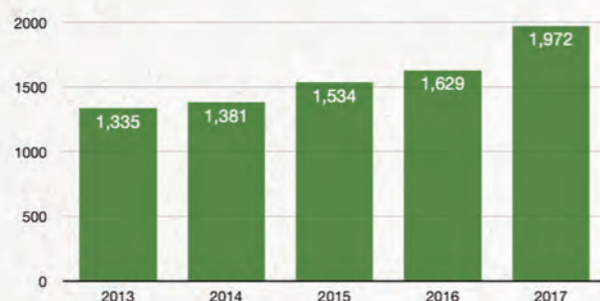




會員資料統計 (截至2023年3月31日止)

- ◆ 基本會員：1,834名
- ◆ 贊助會員：138名

2013年本會會員人數1335人，
2023年3月31日會員人數為1972人，
會員增長達48%。



行山組



中秋節活動



上山下海素食遊



故宮文化博物館遊

社署新增資源服務 (2022年4月至2023年3月)

- ◆ 累計輔導個案：210個
- ◆ 治療及發展性聚會：40次
- ◆ 社區網絡合作：28次
- ◆ 視障人士及家屬照顧者互助小組：5個
- ◆ 外展家訪：146次
- ◆ 新入會會員：56人



手機班



假日贈暖意



扭計骰訓練



殘疾家庭向上遊

本會小組

社交小組

- 長菁組
- 新失明師友小組
- 弱視訓練小組
- 新失明會員
義工探訪組
- 結伴同行夫婦組

服務小組

- 服務行動組
- 義工組
- 假日添暖意
義工組
- 康樂組
- 公共事務組
- 蘋果手機應用
解難諮詢站

興趣班

- 互聯瑜伽班
第20至21期
- TEAMS – 功夫班
- 歌唱技巧訓練班
第12至14期
- 傳統中國功夫
訓練班A、B組
- 蘋果手機新手班
第8至11期
- 網上解說：
第一、二次世界大戰
及現今烏俄局勢

興趣班

- 雙人瑜伽工作坊
第1至3期
- 瑜伽體驗日(第二期)
- 活力椅子舞工作坊
第1至2期
- 高爾夫球體驗班
- 互聯門球訓練班

興趣小組

- 歌詠組
- 牌技組
- 行山組
(A、B兩組)



視障家庭露營



視障夫婦結婚照



視障夫婦活動



中學公眾教育講座



伴我同創光明路：新失明人士服務



本會自2005年10月起至2023年3月31日間，推行了新失明服務，為共835名人士提供了復康訓練。這些訓練包括外展復康服務，教授家居照顧技巧、保護法、沿牆法、方向辨別、使用手杖上下樓梯以及行走和障礙物處理等，幫助視障人士學習適切的生活技能，以改善生活上的不便。此外，專業社工還提供情緒輔導，幫助他們重拾自信，重新融入社區。

為了提高復康訓練的成效，新失明服務在服務過程中發掘了一群心理素質積極、具有獨立性和活動能力的受助者。這些人成為了「同路人訓練導師」，定期指導和陪伴其他受助者進行路線實習。同路人透過分享自己成功的復康經驗，顯著提升了受助者的訓練動力和外出積極性。

隨著疫情緩和，新失明人士的服務得以正常開展。本年度我們進行了276次上門家訪和訓練，其中90%的新失明人士在獨立能力上有所增強，80%積極參與了本中心的工作坊或活動，有助於新受助者融入社群。

由於受助者受眼疾所困，對視力進一步惡化感到擔憂，而照顧者對眼疾的了解不足，這在照顧和情緒上造成了不少壓力。除了眼科覆診外，他們很少有機會接觸患有相同眼疾的病友。本年度，我們共舉辦了6次護視講座，共有490人參與，讓他們了解不同眼疾的進展和治療方法。同時，我們也舉辦了9次病友聚會和活動，共有180人次的新失明人士及照顧者參與，他們在這些活動中交流了眼疾資訊，這不僅減輕了受助者和照顧者對眼疾的擔憂，也讓他們了解到護眼的小貼士。通過同路人之間的分享和互相激勵，他們一起積極面對視障生活的轉變。

光明路學員聚會

感觸之旅：橋咀自然導賞

11月18日，AGHK的義工團隊一對一陪伴光明路的學員前往西貢橋咀地質公園，體驗感觸自然之旅。導賞員採用口述影像及觸摸方式，讓參加者深入了解沙灘和貝殼灘的特點、連島沙洲如何形成、貌似菠蘿包的石英二長岩的來歷、破火山口邊緣的火山角礫岩、豐富的珊瑚群落、沙灘上的植物以及香港世界地質公園的背景。光明路的學員彭佩珠女士分享了她的感受：

「因為患有多種眼病，包括白內障、青光眼、黃斑點病變和視網膜脫落，所以在暗淡光線下我的視力變得模糊。過去，當我的眼睛狀況還不是太糟時，我非常喜歡戶外活動、看電影、旅行和攝影等。但現在因為看不清楚，我變得膽小，也不敢去陌生或人多的地方，常常獨自躲在家中。這次的戶外活動讓我有機會到郊外走走，吹吹海風，感受大自然，心理上也感到舒緩。義工的講解讓我對地質公園有了新的認識。我希望將來還有機會參加這樣的戶外導賞活動，這樣我也不會變得太封閉。」

今次橋咀的導賞體驗非常好，專業的導賞員讓本會視障會員在整個過程中獲益良多。視障朋友們展現出對各種事物的好奇心，專注地聆聽講解，並通過觸摸岩石和沙礫的體驗，學習到了新奇的地質知識。





沙爾德聖保祿女修會慈善基金 驗眼計劃

沙爾德聖保祿女修會慈善基金根據福音的啟示和效法聖保祿「為一切人，成為一切」的服務精神而成立。該基金於2006年2月由沙爾德聖保祿女修會創立，旨在幫助社會中有需要的人士。基金資助的項目覆蓋多個範疇，包括教育、醫療和社會福利，受益地區橫跨香港及其他地區。

香港失明人互聯會很榮幸獲得沙爾德聖保祿女修會慈善基金和香港低視力中心支持。2022年6月起，基金開始資助互聯會有需要會員和親子家庭，在上環的低視力中心接受免費視力評估及眼科診斷服務。這些服務由合資格視光師提供全面的視力檢查，並根據評估報告，將有需要的會員轉介給經驗豐富的眼科醫生進行進一步的眼科診斷。

截至2023年11月，已有58位會員、47個親子小朋友和6個家長接受視力評估及眼科診斷服務。大多數會員反映，計劃中的眼科醫生提供專業的建議和詳細的分析，幫助他們更了解自己的眼病。

當中有4個小朋友的近視程度較同齡小朋友高，需要滴眼藥水以緩減視力退化。由於小朋友都是來自綜援家庭，家長難以負擔眼藥水費用。在基金的資助下批出轄免，為小朋友提供免費眼藥水。另外亦有2個家長驗出有白內障需要做手術，上環低視力中心亦立即安排做手術日期，讓家長能在黃金期內接受適切的治療。

會員呂月明感受

「由於我的視神經受損嚴重，白內障和黃斑病變無法治療，政府眼科和盲人輔導會都無法為我進行手術」，月明感到非常傷心和失落。但在互聯會的安排下，她得以前往上環的聖保祿低視力中心進行眼科檢查和診療。她十分感謝互聯會、低視力中心的醫生和護理人員的診治。眼睛手術成功，只是由於她眼底的問題，手術後有些刺痛。幸好醫護人員及時提供了眼藥水，現在感覺已好多了。她期待下個月另一隻眼的手術也能順利進行，並再次感謝基金的支持、所有相關工作人員的協助。

智能手機(支付寶、HAGO)



科技日新月異，為鼓勵更多視障人士接觸新事物，更貼近社會變化趨勢，失明人互聯會一直致力推動科技與視障共融，定期舉辦手機班，協助他們學習手機應用程式，應付生活日常所需，建立個人自信。

今年度本會更教授支付寶及醫管局流動應用程式HAGO。體驗於商戶使用流動支付，及便利管理個人醫療健康。

殘疾家庭向上游：親子服務

本會親子服務旨在為視障家庭3至18歲子女提供服務，除了培養子女對家庭的責任感，亦提供學習的幫助及進步獎獎勵等方式協助他們。計劃充分運用社會資本及社會義務網絡為殘疾家庭提供希望，讓他們擺脫孤立無助感。

創新多元親子服務

本年度親子服務以創新多元為主題，希望讓小朋友和大朋友感受不一樣的生活。我們首次帶領多個視障家庭去露營，透過親手起營和野外煮食等合作增加親子溝通，亦讓各人體驗「人在野」的感覺。

另外亦與K-POP跳舞學校合作，邀請小朋友學跳時下韓國潮流舞步。小朋友在快而節奏感強烈的歌曲下跳出舞步，可以放鬆心情並提升個人愉悅感。



「孜孜不倦」：互聯會狀元 陳澤謙

現年18歲的澤謙是本會今年度的話題人物，除他驕人的文憑試成績值得稱讚外，其父母的相處和教育模式亦值得大家學習，下面就讓我們一起聽聽他逆境自強的故事吧！



澤謙出世不久，爸爸陳日豪便確診視網膜色素病變，視力急轉直下，再也看不見兒子的模樣。出事後亦與太太轉換了家庭崗位：太太負責養家；日豪則負責照顧小朋友。中國傳統觀念為「男主外、女主內」，但歷經患難後角色的轉變並沒影響夫妻關係，反而大家會為了家庭而互相體諒，這種感情才是最難能可貴。

相比於催谷學習，日豪夫妻更著重培育孩子的品德。他們願意放手讓孩子嘗試，遇到挫折後再指導他。太太為了增進澤謙與爸爸的父子關係，閒時會鼓勵二人去行山。記得日豪曾經分享過帶澤謙外出的經驗，他會把「鈴噏」繫於澤謙的身上，這樣便可以透過聲音知道兒子的方位。所以澤謙從小就意識到爸爸視力不佳，需要多提點面前的障礙物。正因為如此，亦培養到澤謙集中和細心的一面。

澤謙自小性格就謙遜有禮，沒有過多娛樂的他會拆開電腦主機零件再重新裝嵌，對事物的好奇令他愛上了理科，在校內成績亦名列前茅。澤謙深感知識能改變命運，由其從小接觸視障人士，令他更下次決心要修讀醫科，將來回饋社會。

來自低收入家庭的澤謙在學習與支出上需要取得平衡，他知道父母辛勞，所以從不要求父母給他奢侈品，更透過兼職補習自行負擔補習開支。由於DSE補習的費用每次動輒過千，本會得知後由中五開始便為他提供文憑試補助金。本會除了認為澤謙是一個可造之材外，亦希望減輕其家庭負擔。澤謙在得到中心資助後更加勤奮向學，每次在簽收文件時亦對我們表達謝意。最終他不負所望，在文憑試考獲35分的驕人成績，亦獲香港中文大學藥劑學錄取。



Lone Vacation Care 假日贈暖意 地區獨居人士關懷計劃

對一般人而言，長假期是愜意的日子，但對獨居失明人士來說，這卻常是充滿惆悵的時光。由於家居服務和上門送飯服務在這段時間內暫停，且機構放假，這些人士往往會被遺忘，也無人與他們傾談。因此本中心於2021年開展「Lone Vacation Care 假日贈暖意 – 地區獨居人士關懷計劃」。

此計劃通過招募來自不同地區的義工，並為他們提供技巧培訓課程。之後，這些義工會與獨居失明人士在地區上進行配對，旨在加強失明人士的地區支援網絡。在新年、復活節、聖誕節等長假期，義工在不同社區進行上門探訪慰問、陪同購買日常用品、到公園散步等活動。

Lone Vacation Care計劃由2021年4月的復活節展開第一次服務。直至2023年11月，計劃已有67名熱心義工，受惠獨居失明人士總人數已有96位。現時有47位受惠者因計劃而活躍於社區；部份因入住院舍、病逝而退出此計劃。計劃的優點有別於一般的義工服務，時間較彈性和可選擇，可方便義工拋開上班、照顧家庭等的顧慮；計劃主要以一義工對一失明人士的照顧，較為固定，可長期跟進個別失明人士的需要等問題。

此外，計劃於2023年1月28日和12月3日與新世界發展有限公司合作，舉辦了「遊迪士尼活動」和「大澳之鄉體驗活動」。活動中安排了復康巴士接送體弱的獨居失明人士參加活動。我們再次感謝新世界發展有限公司對中心的支持，讓義工能一對一接送失明人士到迪士尼和大澳。通過這些活動，失明人士也能體驗迪士尼的樂趣，並在大澳品嚐當地的海味和茶果等特產。本中心也歡迎與更多社會賢達合作，共同舉辦適合獨居失明人士的活動。

新世界集團義工隊 – 義工代表Brenda感受：

「新世界集團義工隊」自2021年起與失明人互聯會合作，透過「心眼看世界」系列活動服務失明的獨居長者，讓他們在我們的企業義工陪伴下遊走不同地方，用心感受社會關愛。在互聯會幾位充滿熱誠的同工協助下，我們的義工隊由了解失明人士開始，經過不同的學習及培訓，逐步建立帶領失明人士外出的信心及能力，及至成功與他們同遊不同的香港名勝如星光大道、迪士尼樂園及大澳等。「心眼看世界」系列活動不但為失明人士的生活帶來樂趣及色彩，亦提升我們企業義工的能力及同理心，充份展現新世界集團以「創造共享價值」為本的企業理念。





Lone Vacation Care 假日贈暖意 地區獨居人士關懷計劃

義工范惠儀感受

2022年一位朋友問我是否有時間去當義工，隨後我在臉書上看到了失明人互聯會的義工招募信息 – Lone Vacation Care。了解了這個計劃的內容後，我覺得它非常有意義，於是決定參與。

過去我也參與過其他機構的義工服務，如派發福袋、定期與視障人士一起探訪長者、參與賣旗等；這次的服務是在假日探訪視障長者，我相信自己可以勝任。

探訪的對象是一位80多歲的獨居婆婆，她非常精靈而且有幽默感。每當節日前去探訪她時，我都會提前打電話約定日期和時間，在通話中與她聊聊天。

婆婆雖然先天視障，但並沒有阻止她年輕時外出學習和工作；每次聽她「想當年」，我都能深切感受到她對生命的熱情和對家庭的付出，這讓我深思，身體的障礙雖然存在，但心智的力量更為重要。在今天的都市生活中，雖然物質豐富，但人們的精神層面卻相對貧乏，這可能是因為我們心智太脆弱了。

婆婆近年來身體狀況變差，不能獨自外出，所以後來探訪她的時候，我也會陪她去商場逛逛或偶爾去酒樓喝茶。

每次聽婆婆話當年，她就像一位說書人，平靜而從容，像是講述別人的故事。能以如此淡然的態度回顧過去，或許正是人生智慧的體現。從小到大，我一直喜歡聽長輩們「想當年」的故事。每個人都是獨一無二的；他們是如何走到今天的？這是一個極富趣味且未完的「故事」。

對我而言，義工服務不僅是付出，更是生命的啟發，是互相成就的機會。

義工梁福建感受

在2021年，透過太太（咪姐）的介紹，我有幸接觸到失明人互聯會並參與其活動。在這之前，我心目中的失明人士是百分百需要人照顧，不能自己參與活動。

記得我在「Lone Vacation」中第一次正式接觸失明人士，他們是一對失明夫婦。我非常好奇他們是如何互相照顧！後來我發現他們對周圍的事物非常熟悉，動作比一般人更敏捷，正所謂「人盲心不盲」，他們比常人更有洞察力。

後來我加入了行山小組，這徹底顛覆了我的認知。我原本不知道失明人士如何行山，畢竟那是崎嶇的山路，並非平坦的道路。雖然知道有領跑員的存在，但運動員是經過長期訓練和與領跑員溝通的。帶領行山的相處時間只是短短幾小時，怎能達到完美的溝通和融合！記得我第一次行山時，完全不知從何入手，反而是失明朋友安慰我，教我如何帶領他們，讓我有些臉紅。這次經歷之後，我更加決心挑戰自我，更多地參與帶領失明朋友出外，無論是行山還是其他活動。我相信經驗是可以累積的。

多次的接觸讓我發現，失明人士是如此的樂觀、自信和自我肯定。相比之下，普通人在惡劣環境下能保持這樣的樂觀和自信的有多少呢？當然，也有一些失明人士相對內向，那就讓我們帶領他們向前再邁進一步。我堅信，只要今天能出多少力，就出多少力，哪怕將來沒有力氣也無妨。這樣的義工工作讓彼此都受益。我深刻體會到，能否看見世界並非天生注定，誰也無法保證一生都能看見。中途失明的朋友所經歷的巨大衝擊，無論是生理上還是心理上，都是難以承受的。既然他們有決心，勇敢地走出最艱難的一步，我們為何不伸出援手呢？他們的決心也是我們可以學習的。

總而言之，失明人士與我們大家都是活在同一個世界裡，沒有分你我，應互相扶持。既然他們能夠以耳代目地生活下去，我們何不與他們並肩同行，共享同一片天空下的生活。



Lone Vacation Care 假日贈暖意 地區獨居人士關懷計劃

義工何瑞眉感受

因與老伴（梁Sir）人生搭向銀齡一族之路，步入退休人士行列……加上疫情出現，令一個歷年來都有參與不同義工服務的我，對自己的人生產生重新規劃的想法！

是否退休就不理世事？是否有更多不同的朋友需要我呢？繼續行義工之旅，加深學習和認識，參與更多不同類別的服務呢？就在這時刻，在facebook見到一個好特別的義工招募帖文抬頭是……「要人！要人！」服務對象只寫上「獨居殘疾人士」，再往上看主辦機構為「香港失明人互聯會」；使我更想了解多些內容，在2021年3月份決定報名參加此計劃。不久，收到同姓的何姑娘電話，告知配對了一對居住於沙田的視障夫婦是我和梁Sir的 Lone Vacation Care的探訪慰問對象。

9月份在互聯會施姑娘協助下參與第一次探訪，了解探訪獨居失明人士是個很有義意的服務。回程時姑娘邀請我和梁Sir 一同參與成為行山義工，參與活動前更提供「帶領失明人士技巧工作坊」，從中學習到很多新事物，使我獲益良多，好有興趣協助。繼而分別服務互聯會的不同活動，於疫情中在地鐵中分派物資予會員、定期的行山活動、探訪活動、賣旗義工、陪同會員茶聚及出席不同活動、開放日等。

每次與會員相處的過程中感受都很深刻，他們皆是樂觀、積極和精明的一群朋友，深深感動了40年行義工之路的我。我做義工的心態是「同行」，歷年來都不變；但經歷這個新體驗後，更發現做義工是一種「學習」，每次服務後都好像上了一課，讓我認識很多不同的事物，更加懂得珍惜，加上感受到互聯會全體同事的真誠和付出，使我會繼續參與香港失明人互聯會將來的服務，請大家繼續為我們的會員加油！

視障獨居長者家居服務



本會為視障獨居的長者提供大小型的家居維修及翻新工程。

服務內容：通過家訪，觀察及評估獨居長者的家居環境情況，將需要維修的家居分為三種類別：

全屋翻新工作，需3天的工程

大型維修，需2天的工程

小型家居修理，即日完成

經本會評估後，合資格視障長者不用收費，並享有部份的工程物料的資助。

受惠對象為視障獨居長者及綜援或長者生活津貼受助者。

現時本會有179名合資格的獨居視障長者，他們分別居於港九新界各區。由2022年4月1日至2023年3月31日，我們提供超過190次家居維修及安全檢查。

同時，本會亦從中原慈善基金及零一心意平台籌募部分經費，為獨居而仍未輪到家務助理服務的視障會員，根據實際需要提供大掃除及更換家俬的服務計劃，以改善家居環境。



結伴同行夫婦組

承接(2022)年度之夫婦學堂，本中心於2023年5月成立了夫婦小組，招募了共八對夫婦成為核心小組成員，並由組員投票命名為「結伴同行」夫婦組。小組共同協定每月進行一次小組活動，並會定期每2-3月進行一次的盲人安老院探訪活動。



WeTV無障礙媒體

WeTV無障礙媒體是香港首個由殘疾人士做主持的網上頻道，致力向公眾推廣無障礙資訊及展示殘疾人士才能、推動無障礙城市發展。WeTV制作的內容涵蓋多個殘疾類別，由無障礙設施、無障礙出遊、視障人士使用智能電話、烹飪教學，到消閒娛樂影片通通都有。WeTV目前在YouTube上有超過1.8萬訂閱人數、facebook追蹤人數超過2.4萬，是全港最多人追蹤的殘疾人士網上頻道。

WeTV本年度的新動向包括：



WeTV與非牟利慈善機構《語橋社資》及聾人頻道《豐場蜜語》合作，共同設計及製作一共十集的全新手語節目《手語新手教室》，目標是讓觀眾在十集節目中學到基礎手語詞彙及句子，可與聾人作基礎交流。節目除有手語示範，亦有手語練習環節，幫助觀眾加深記憶，牢固緊記手語打法。



聾人大廚阿容主持的皇牌節目《容易煮》，在YouTube中開啟獨立頻道，集中發布煮食內容，聚集一群與阿容一樣愛煮愛吃的吃貨。《容易煮》將繼續教授烹飪技巧，更會走遍香港發掘出色的餐廳、尋找購買高質食材和廚具的小店，與觀眾一同享受煮食和美食！

立即掃描QR Code
like&subscribe
緊貼WeTV!





賣旗活動順利舉行 感謝各界共襄盛舉

互聯會2022/23年度賣旗日已於11月25日在港島區順利舉行，共有1,400多名義工鼎力支持，共襄盛舉。善款總額正在點算中，稍後將另行公佈。

本會藉此機會鳴謝各商業、友好機構、學校團體、視障會員及家屬、員工、義工及熱心人士的積極參與，以及各位善長的慷慨解囊，衷心感謝各位對本會及視障社群的支持。

賣旗活動所籌得善款，將撥作本會拓展殘疾人士家庭服務和發展獨居視障長者服務。在此衷心感謝大家的鼎力支持，鳴謝名單如下(排名不分前後)：

贊助機構

香記咖啡集團有限公司
和興白花油藥廠有限公司

支持團體 / 人士

藝人及瑜珈教練 林芊妤小姐(Coffee)
資深化妝師 Ricky KAZAF
香港鐵路有限公司
香港上海匯豐銀行有限公司
軒尼詩道官立小學
嶺南幼稚園
李陞小學

寶血小學
香港嘉諾撒學校
嘉諾撒書院
寶血女子中學
聖雅閣福群會
港島民生書院

賣旗活動順利舉行



感謝各界共襄盛舉



鳴謝

荷蒙社會福利署、香港公益金、愛心聖誕大行動、獎券基金、中銀香港百年華誕慈善計劃、沙爾德聖保祿女修會慈善基金、黃廷方慈善基金、新世界集團義工隊、香港化粧品同業協會、創興銀行有限公司、國際獅子會總會中國港澳303區、筆架山獅子會、圓方獅子會、快活谷獅子會、摩星嶺獅子會、清水灣獅子會、一路愛單車、緯絡活動策劃顧問有限公司、香港中小型企業總商會、香港企業聯會、柏福服飾有限公司、杰文實業有限公司、皇玥集團、01心意平台、余兆麒醫療基金、中原慈善基金、亞非港實業有限公司、香港社會服務聯會、香港免蘆術數學會、和興白花油藥廠有限公司、惠家慈善基金、榮華慈善基金、香港中華煤氣有限公司、豐泰米行（香港）有限公、香記咖啡、Mr. HENRY YEUNG等捐款資助本會服務，令視障人士及家庭受惠。

運用整筆過撥款儲備預算 2022 - 2023年度

本會於2022-23年度整筆撥款的儲備金額共\$928,084.34，經本會執行委員會討論後預算方案如下：

- (1) 50%的儲備預留即\$464,042.17，因應新的需要，而發展新的服務，如視障人士家庭服務，獨居長者的服務以及發展視障才能的服務。
- (2) 另外50%的儲備\$464,042.17，預留為履行本會僱員合約上的責任。

每年本會將於年報上公佈有關整筆過撥款的儲備金額及運用方式，以更好地向社會問責。

運用整筆過撥款強積金儲備預算 2022 - 2023年度

本會於2022-23年度整筆過撥款的累積強積金的儲備金額共\$326,623.07元，經本會執行委員會討論後預算方案如下：

- (1) 用以提高MPF強積金比例予年資高的職員。服務超過十年及十五年年資的職員，將會提高MPF強積金比例。
- (2) 年資長及工作表現良好的職員，接近退休年齡，提前退休者，會有機會獲一筆過獎金撥入其個人MPF戶口作長期服務金以作鼓勵職員長期服務及工作表現良好。

CHAN HAU MAN Certified Public Accountant
陳巧敏 執業會計師

F14 A102, 10/F, Tung Nam Factory Building,
40 Ma Tau Kok Road, Tseikwan, Kowloon, Hong Kong.
香港九龍土瓜灣馬頭角德輔道中40號10樓A102室
Tel 電話: 2768 8804 Fax 傳真: 2715 4881

Proprietor: Chan Han Man, P.A. (CMA, CPA, FRSA(Eng))

INDEPENDENT AUDITORS' REPORT
TO THE EXECUTIVE COMMITTEE OF

香港失明人互聯會
HONG KONG FEDERATION OF THE BLIND

香港失明人互聯會
HONG KONG FEDERATION OF THE BLIND
REPORTS AND FINANCIAL STATEMENTS
FOR THE YEAR ENDED 31 MARCH 2023

Opinion
We have audited the financial statements set out on pages 3 to 15, which comprise the statement of financial position as at 31 March 2023, statement of profit or loss and other comprehensive income, state of changes in funds and statement of cash flows for the year then ended, and notes to the financial statements, including a summary of significant accounting policies.

In our opinion, the financial statements give a true and fair view of the financial position of the association as at 31 March 2023, and of its financial performance and its cash flows for the year then ended in accordance with Hong Kong Financial Reporting Standards ("HKFRSs") issued by the Hong Kong Institute of Certified Public Accountants and have been properly prepared in compliance with the Hong Kong Companies Ordinance (Cap. 622).

Basis of opinion
We conducted our audit in accordance with Hong Kong Standards on Auditing ("HKSA") issued by the HKICPA. Our responsibilities under those standards are further described in the Auditor's responsibilities for the audit of the financial statements section of our report. We are independent of the association in accordance with the HKICPA's Code of Ethics for Professional Accountants ("the Code"), and we have fulfilled our other ethical responsibilities in accordance with the Code. We believe that the audit evidence we have obtained is sufficient and appropriate to provide a basis for our opinion.

Other information
The directors are responsible for the other information. The other information comprises all information included in the directors' report and financial statements, but does not include the financial statements and our auditor's report thereon.

Our opinion on the financial statements does not cover the other information and we do not express any form of assurance conclusion thereon.

In connection with our audit of the financial statements, our responsibility is to read the other information and, in doing so, consider whether the other information is materially inconsistent with the financial statements or our knowledge obtained in the audit or otherwise appears to be materially misstated. If, based on the work we have performed, we conclude that there is a material misstatement of this other information, we are required to report that fact. We have nothing to report in this regard.

Responsibilities of directors and those charged with governance for the financial statements
The directors are responsible for the preparation of the financial statements that give a true and fair view in accordance with the Hong Kong Financial Reporting Standards issued by the HKICPA and the Hong Kong Companies Ordinance, and for such internal control as the directors determine is necessary to enable the preparation of financial statements that are free from material misstatement, whether due to fraud or error.

In preparing the financial statements, the directors are responsible for assessing the association's ability to continue as a going concern, disclosing, as applicable, matters related to going concern and using the going concern basis of accounting unless the directors either intend to liquidate the association or to cease operations, or have no realistic alternative but to do so.

Those charged with governance are responsible for overseeing the association's financial reporting process.

-1-

CONTENTS	PAGES
INDEPENDENT AUDITORS' REPORT	1-2
STATEMENT OF PROFIT OR LOSS AND OTHER COMPREHENSIVE INCOME	3
STATEMENT OF FINANCIAL POSITION	4
STATEMENT OF CHANGES IN FUNDS	5
STATEMENT OF CASH FLOWS	6
NOTES TO THE FINANCIAL STATEMENTS	7-15

EXPRESSED IN HONG KONG DOLLARS

CHAN HAU MAN
Certified Public Accountant

Auditor's responsibilities for the audit of the financial statements
Our objectives are to obtain reasonable assurance about whether the financial statements as a whole are free from material misstatement, whether due to fraud or error, and to issue an auditor's report that includes our opinion. This report is made solely to you, as a body, in accordance with section 405 of the Hong Kong Companies Ordinance (Cap. 622), and for no other purpose. We do not assume responsibility towards or accept liability to any other person for the contents of the report.

Reasonable assurance is a high level of assurance, but is not a guarantee that an audit conducted in accordance with HKSA will always detect a material misstatement when it exists. Misstatements can arise from fraud or error and are considered material if, individually or in the aggregate, they could reasonably be expected to influence the economic decisions of users taken on the basis of these financial statements.

As part of an audit in accordance with HKSA, we exercise professional judgment and maintain professional skepticism throughout the audit. We also:

- Identify and assess the risks of material misstatement of the financial statements, whether due to fraud or error, design and perform audit procedures responsive to those risks, and obtain audit evidence that is sufficient and appropriate to provide a basis for our opinion. The risk of not detecting a material misstatement resulting from fraud is higher than for one resulting from error, as fraud may involve collusion, forgery, intentional omissions, misrepresentations, or the override of internal control.
- Obtain an understanding of internal control relevant to the audit in order to design audit procedures that are appropriate in the circumstances, but not for the purpose of expressing an opinion on the effectiveness of the association's internal control.
- Evaluate the appropriateness of accounting policies used and the reasonableness of accounting estimates and related disclosures made by the directors.
- Conclude on the appropriateness of the directors' use of the going concern basis of accounting and, based on the audit evidence obtained, whether a material uncertainty exists related to events or conditions that may cast significant doubt on the association's ability to continue as a going concern. If we conclude that a material uncertainty exists, we are required to draw attention in our auditor's report to the related disclosures in the financial statements or, if such disclosures are inadequate, to modify our opinion. Our conclusions are based on the audit evidence obtained up to the date of our auditor's report. However, future events or conditions may cause the association to cease to continue as a going concern.
- Evaluate the overall presentation, structure and content of the financial statements, including the disclosures, and whether the financial statements represent the underlying transactions and events in a manner that achieves fair presentation.

We communicate with those charged with governance regarding, among other matters, the planned scope and timing of the audit and significant audit findings, including any significant deficiencies in internal control that we identify during our audit.


CHAN HAU MAN
Certified Public Accountant
Hong Kong

Hong Kong Dated, 9 October 2023

-2-

香港失明人互聯會

HONG KONG FEDERATION OF THE BLIND
STATEMENT OF PROFIT OR LOSS AND OTHER COMPREHENSIVE INCOME
FOR THE YEAR ENDED 31 MARCH 2023

	2023	2022
	HK\$	HK\$
REVENUE		
Government subvention	3,949,598.00	4,027,145.00
Less: surplus repaid to S.W.D	(1,454.00)	(4,555.00)
	3,948,144.00	4,022,590.00
Lottery fund	59,000.00	59,000.00
Specific grants and donations	3,878,691.12	2,259,841.30
Community chest	355,600.00	355,600.00
Membership fee	13,169.00	19,040.00
Foundation fee income	220.00	320.00
Flag day income	-	-
Rental and rates	7,345.00	7,345.00
Activities income	125,035.00	18,660.00
	8,387,204.12	6,742,396.30
OTHER REVENUE		
Bank interest received	60,538.18	38,555.02
Sundry income	230.00	-
	8,447,972.30	6,780,951.32
	(7,108,890.76)	(6,760,508.76)
ADMINISTRATIVE EXPENSES		
	1,339,081.54	20,442.56

The annexed notes from page 7 to 15 form an integral part of these financial statements.

-3-

香港失明人互聯會
HONG KONG FEDERATION OF THE BLIND
STATEMENT OF FINANCIAL POSITION
AS AT 31 MARCH 2023

Note	Headquarters HK\$	Shun Lee Centre HK\$	2023 HK\$	2022 HK\$
NON CURRENT ASSETS				
Office equipment	-	-	-	-
CURRENT ASSETS				
Deposit and prepayment	-	2,000.00	2,000.00	2,000.00
Accounts receivables	500.00	-	500.00	-
Cash and bank balances	2,232,661.76	1,866,454.22	4,099,115.98	5,897,466.60
Fixed deposits	7,581,746.09	-	7,581,746.09	4,476,079.53
	9,814,907.85	1,868,454.22	11,683,362.07	10,375,546.13
LESS: CURRENT LIABILITIES				
Accounts payables	-	526.00	526.00	391.60
Receipts in advance	100.00	500.00	600.00	32,000.00
	100.00	1,026.00	1,126.00	32,391.60
NET CURRENT ASSETS	9,814,807.85	1,867,428.22	11,682,236.07	10,343,154.53
NET ASSETS	9,814,807.85	1,867,428.22	11,682,236.07	10,343,154.53
Represented by:				
AGENCY RESERVES				
General Fund	9,814,807.85	706,331.07	10,521,138.92	9,419,001.70
Non-Current-Asset Fund	-	-	1,161,097.15	924,152.83
Social Welfare Reserve Fund	-	-	11,682,236.07	10,343,154.53

The financial statements on page 3 to 15 were approved and authorised for issue by the Board of Executive Committee Members on 9 October 2023 and are signed on its behalf by:-

光臨

TANG Kwong Po
Chairman

YAN Wai Lung
Treasurer

- 4 -

香港失明人互聯會
HONG KONG FEDERATION OF THE BLIND
STATEMENT OF CHANGES IN FUNDS
FOR THE YEAR ENDED 31 MARCH 2023

	Social Welfare Reserve Fund					Non-Current Asset Fund HK\$	General Fund HK\$	Total HK\$
	Lump Sum Grant Reserve HK\$	Provident Fund Subvention Surplus HK\$	Reserve of Rent and Rates HK\$	Reserve of Central Item HK\$	Subtotal HK\$			
At 31 April 2021	702,711.69	266,262.58	(47,388.20)	-	921,586.07	-	9,401,125.90	10,322,711.97
Surplus/(Deficit) by own resources	18,034.53	25,524.29	368.00	-	43,926.82	-	73,864.45	117,791.27
Transfer								
- Adjustment: Claw-back of Rent & Rates letter ref: SWD SF/SAS/4-35/2/72(328)	4,555.00	-	(4,555.00)	-	-	-	-	-
- Depreciation charged	-	-	-	-	-	-	-	-
- Assets acquired	-	-	-	-	-	-	-	-
- Non-Social Welfare Reserve Fund	-	-	-	-	(41,360.06)	-	(55,988.65)	(97,348.71)
At 31 March 2022	725,301.22	291,786.87	(51,575.20)	-	924,152.83	-	9,419,001.70	10,343,154.53
Surplus/(Deficit) by own resources	201,789.13	34,836.20	779.00	-	237,404.33	-	-	237,404.33
Transfer								
- Adjustment: Claw-back of Rent & Rates	1,454.00	-	(1,454.00)	-	-	-	-	-
- 2021-22 adjustment	-	-	-	-	-	-	-	-
- 社福發展基金(第二期) interest income	(460.01)	-	-	-	(460.01)	-	460.01	-
- Depreciation charged	-	-	-	-	-	-	-	-
- Assets acquired	-	-	-	-	-	-	-	-
- Non-Social Welfare Reserve Fund	-	-	-	-	-	-	1,101,677.21	1,101,677.21
At 31 March 2023	928,084.34	326,623.07	(52,250.20)	-	1,161,097.15	-	10,521,138.92	11,682,236.07

The annexed notes from page 7 to 15 form an integral part of these financial statements.

- 5 -

香港失明人互聯會
HONG KONG FEDERATION OF THE BLIND
STATEMENT OF CASH FLOWS
FOR THE YEAR ENDED 31 MARCH 2023

	2023 HK\$	2022 HK\$
Profit/(Loss) before taxation	1,339,081.54	20,442.56
Adjustment for:		
Adjustment made in general fund	-	-
Bank interest received	(60,538.18)	(38,555.02)
Depreciation	1,278,543.36	(18,112.46)
Operating profit/(loss) before working capital changes (Increase)/Decrease in:-		
Deposit and prepayment	-	7,000.00
Accounts receivables	(500.00)	23,568.40
Increase/(Decrease) in:-		
Accounts payables	134.40	(59,483.01)
Receipts in advance	(31,400.00)	(3,404.70)
Cash generated from operations	1,246,777.76	(50,631.77)
Interest paid	-	-
Profits tax refund/(paid)	-	-
Net cash flows from operating activities	1,246,777.76	(50,631.77)
Cash flows from investing activities		
Bank interest received	60,538.18	38,555.02
Net cash flows from investing activities	60,538.18	38,555.02
Cash flows from financing activities		
Payment of finance lease liabilities	-	-
Net cash flows from financing activities	-	-
Increase/(Decrease) in cash and cash equivalents	1,307,315.94	(12,076.75)
Cash and cash equivalents at the beginning of year	10,373,546.13	10,385,622.88
Cash and cash equivalents at the end of year	11,680,862.07	10,373,546.13
Analysis of the balances of cash and cash equivalents		
Cash and bank balances	4,099,115.98	5,897,466.60
Fixed deposits	7,581,746.09	4,476,079.53
	11,680,862.07	10,373,546.13

The annexed notes from page 7 to 15 form an integral part of these financial statements.

- 6 -

香港失明人互聯會
HONG KONG FEDERATION OF THE BLIND
NOTES TO THE FINANCIAL STATEMENTS
FOR THE YEAR ENDED 31 MARCH 2023

1. **GENERAL**
Hong Kong Federation of the Blind ("the association") is a society registered in accordance with the provision of section 5A(1) of the Societies Ordinance. Its registered office and principal place of business at G/F, Shun Lee Estate Community Centre, No. 2 Shun Chi Street, Kwun Tong, Kowloon, Hong Kong.

The principal activities of the association are to encourage visually impaired people to fight for equal activities.

The association's financial statements have been prepared in accordance with all applicable Hong Kong Financial Reporting Standards, which includes all applicable individual Hong Kong Financial Reporting Standards, Hong Kong Accounting Standards and Interpretations issued by the Hong Kong Institute of Certified Public Accountants, accounting principles generally accepted in Hong Kong, and the requirements of the Hong Kong Companies Ordinance.

The financial statements comply with the Hong Kong Financial Reporting Standards and on the basis that the association is a going concern. The measurement base adopted is the historical cost convention.

The application of the new and revised Hong Kong Financial Reporting Standards has no material effects on the Association's financial performance and positions.

2. **PRINCIPAL ACCOUNTING POLICIES**

The principal accounting policies which have been adopted in the preparation of the financial statement of the association are set out below: -

a) **Revenue recognition**
The Association recognises revenue when the amount of revenue can be reliably measured, it is probable that future economic benefits will flow to the entity and specific criteria have been met for each of the association's activities as described below. The amount of revenue is not considered to be reliably measurable until all contingencies relating to the receipts have been resolved. The Association bases its estimates on historical results, taking into consideration, the type of transaction and the specifics of each arrangement.

Revenue from Association fee is recognised upon the admittance and registration of visually impaired people.

Government subvention is recognised on receivable basis.

Charitable receipts and activities income are recognised on actual receipt basis.

Bank interest income is recognised on a time proportion basis on the amount of outstanding deposits at the applicable interest rates.

- 7 -

香港失明人互聯會
HONG KONG FEDERATION OF THE BLIND
NOTES TO THE FINANCIAL STATEMENTS
FOR THE YEAR ENDED 31 MARCH 2023

2. PRINCIPAL ACCOUNTING POLICIES (CON'D)

- b) Office equipment
Office equipment are stated at cost less accumulated depreciation and accumulated impairment losses.
The depreciable amount of an item of office equipment is allocated on a systematic basis over its estimated useful life using the straight-line method. The principal annual rate used for depreciation is 20%.
- c) Impairment losses
An assessment is made at each reporting date to determine whether there is any indication of impairment or reversal of previous impairment, including items of property, plant and equipment, intangible assets and long-term investments. In the event that an asset's carrying amount exceeds its recoverable amount, the carrying amount is reduced to recoverable amount and an impairment loss is recognised in the statement of profit or loss and other comprehensive income. A previously recognised impairment loss is reversed only if there has been a change in the estimates used to determine the recoverable amount, however not to an amount higher than the carrying amount that would have been determined (net of amortisation or depreciation), had no impairment losses been recognised for the asset in prior periods.
- d) Foreign currencies
Monetary assets and liabilities denominated in foreign currencies are translated into Hong Kong dollars at the rates of exchange prevailing at the reporting date or at the relevant forward contract rates where applicable. Exchange differences are included in the statement of profit or loss and other comprehensive income. Transactions during the year are converted into Hong Kong dollars at the rates of exchange ruling at the dates of transactions.
- e) Related parties
Parties are considered to be related to the association if the association has the ability, directly or indirectly, to control the party or exercise significant influence over the party in making financial and operating decisions, or vice versa, or where the association and the party are subject to common control or common significant influence. Related parties may be individuals (being members of key management personnel, significant shareholders and/or their close family members) or other entities and include entities which are under the significant influence of related parties of the association where those parties are individuals, and post-employment benefit plans which are for the benefit or employees of the association or of any entity that is a related party of the association.
- f) Employee benefits
The association provides defined contribution plans based on Hong Kong practices and regulations. The plans cover full-time employees and provide for contributions at rates specified in the terms of the scheme. The association's contributions relating to defined contribution plans are charged to statement of profit or loss and other comprehensive income in the year to which they relate.

- 8 -

香港失明人互聯會
HONG KONG FEDERATION OF THE BLIND
NOTES TO THE FINANCIAL STATEMENTS
FOR THE YEAR ENDED 31 MARCH 2023

3. REVENUE	Revenue represents Government subvention, grants and donations received during the year.	
	2023	2022
	HK\$	HK\$
Government subvention	3,949,598.00	4,027,145.00
Specific grants and donations	3,878,691.12	2,259,841.30
4. SURPLUS FOR THE YEAR	2023	2022
Surplus for the year is arrived at:-	HK\$	HK\$
Depreciation	-	-
Government rent, rates and management fee	6,566.00	6,977.00
Key management personal remuneration	848,624.69	853,530.33
Other staff costs	4,257,042.52	4,346,484.76
and (crediting):-	(60,538.18)	(38,555.02)
Bank interest received	-	-
5. OFFICE EQUIPMENT	Shun Lee Centre	
	Headquarters	Total
	HK\$	HK\$
Cost	48,690.00	48,690.00
At 1/4/2021	-	-
Additions	48,690.00	48,690.00
At 31/3/2022	48,690.00	48,690.00
Additions	-	-
At 31/3/2023	48,690.00	48,690.00
Accumulated depreciation	48,690.00	48,690.00
At 1/4/2021	-	-
Charge for the year	-	-
At 31/3/2022	48,690.00	48,690.00
Charge for the year	-	-
At 31/3/2023	48,690.00	48,690.00
Net book value	-	-
At 31/3/2023	-	-
At 31/3/2022	-	-

The depreciation is calculated on straight line basis on 20% annual rate.

- 10 -

香港失明人互聯會
HONG KONG FEDERATION OF THE BLIND
NOTES TO THE FINANCIAL STATEMENTS
FOR THE YEAR ENDED 31 MARCH 2023

2. PRINCIPAL ACCOUNTING POLICIES (CON'D)

- h) Accounts receivables
At the end of each reporting period, the carrying amounts of trade and other receivables are reviewed to determine whether there is any objective evidence that the amounts are not recoverable. If so, an impairment loss is recognised immediately in profit or loss.
- i) Accounts payables
Accounts payables are initially recognised at fair value and thereafter stated at amortised cost unless the effect of discounting would be immaterial, in which case they are stated at cost.
- j) Cash and cash equivalents
Cash comprises cash on hand and at bank and demand deposits with bank. Cash equivalents are short-term, highly liquid investments that are readily convertible to known amounts of cash and which are subject to an insignificant risk of changes in value.
- k) Provisions and contingent liabilities
Provisions are recognised when the Association has a present obligation (legal or constructive) as a result of a past event, and it is probable that an outflow of economic benefits will be required to settle the obligation and a reliable estimate of the amount of the obligation can be made. Where the time value of money is material, provisions are stated at the present value of the expenditure expected to settle the obligation. All provisions are reviewed at each reporting date and adjusted to reflect the current best estimate.
Where it is not probable that an outflow of economic benefits will be required, or the amount cannot be estimated reliably, the obligation is disclosed as a contingent liability, unless the probability of outflow of economic benefits is remote. Possible obligations, whose existence will only be confirmed by the occurrence or non-occurrence of one or more future uncertain events not wholly within the control of the Association, are also disclosed as contingent liabilities unless the probability of outflow of economic benefits is remote.
- l) Critical accounting estimates and judgement
The association's management makes assumptions, estimates and judgements in the process of applying the association's accounting policies that affect the assets, liabilities, income and expenses in the financial statements prepared in accordance with Hong Kong Financial Reporting Standards. The assumptions, estimates and judgements are based on historical experience and other factors that are believed to be reasonable under the circumstances. While the management reviews their judgements, estimates and assumptions continuously, the actual results will seldom equal to the estimates.

- 9 -

香港失明人互聯會
HONG KONG FEDERATION OF THE BLIND
NOTES TO THE FINANCIAL STATEMENTS
FOR THE YEAR ENDED 31 MARCH 2023

6. ACCOUNTS RECEIVABLES	2023	2022
	HK\$	HK\$
Headquarter	500.00	-
Shun Lee Centre	-	-
7. INCOME TAX	2023	2022
	HK\$	HK\$
No provision for Hong Kong profits tax has been provided as the Association is exempted from profits tax under the provision of section 88 of the Inland Revenue Ordinance.	-	-
8. SOCIAL WELFARE DEVELOPMENT FUND ("SWDF")	2023	2022
	HK\$	HK\$
SWDF Phase 2 社福發展基金(第二期)	352,660.43	352,660.43
Balance at the beginning of year	460.01	-
Add: 2021-22 adjustment from headquarter	-	-
Less: Refund to SWD	(353,120.44)	-
Balance at the end of year	352,660.43	352,660.43
SWDF Phase 3 社福發展基金(第三期)	643,483.13	641,297.97
Balance at the beginning of year	5,000.00	33,500.00
Add: Allocation from SWDF	-	-
Less: Interest received	-	20.16
Expenditure during the year	-	(31,335.00)
Expenditure for projects under scope A	-	-
Expenditure for projects under scope B (non-IT)	-	-
Expenditure for projects under scope B (IT)	-	-
Expenditure for administrative support	-	-
Balance at the end of year	648,483.13	643,483.13
9. BLOCK GRANT RESERVE	2023	2022
	HK\$	HK\$
Balance at the beginning of year	97,453.54	41,803.64
Add: Block grant received during the year	59,000.00	59,000.00
Less: Expenditure during the year	(22,052.40)	(3,350.10)
Balance at the end of year	134,401.14	97,453.54

- 11 -

香港失明人互聯會
HONG KONG FEDERATION OF THE BLIND
NOTES TO THE FINANCIAL STATEMENTS
FOR THE YEAR ENDED 31 MARCH 2023

10. FLAG DAY FUND	2023 HK\$	2022 HK\$
Play day fund balance brought forward	1,891,213.72	1,892,066.47
Flag day income	-	-
Others	-	-
Street collection	-	-
Flag day expenses		
Insurance	-	-
Printing and stationery	-	-
Professional fee	-	-
Purchase and cleaning of flag bags	-	-
Sundry	-	-
Transportation	-	-
Play day net income for the year	-	-
Less: Usage of the donations collected		
Staff salaries	-	-
Mandatory provident fund	-	-
Less: Specific activities expenses		
Barrier Free Education Program	-	-
Talent development class of the visually impaired	-	-
Development scheme for the family of disabled persons	-	-
Social and recreational activities for visual impairment	-	-
Employment support scheme for disabled persons	-	-
Disable elderly life education & maintenance service	-	-
Newly blind training	58.99	852.75
Play day fund balance carried forward	58.99	852.75
	1,891,154.73	1,891,213.72

- 12 -

香港失明人互聯會
HONG KONG FEDERATION OF THE BLIND
NOTES TO THE FINANCIAL STATEMENTS
FOR THE YEAR ENDED 31 MARCH 2023

10. FLAG DAY FUND (CONTD)
The unused balance HK\$1,891,154.73 will be carried forward and be retained in the General Reserve of the Association and included in the Association's Hong Kong dollar bank savings account and fixed deposit as at reporting date. In addition, the amount has been used for the Barrier Free Education Program, Talent development class of the visually impaired, Development scheme for the family of disabled persons, Social and recreational activities for visual impairment, Employment support scheme for disabled persons, Disable elderly life education & maintenance service, and Newly blind training since 31 March 2023.

11. CAPITAL RISK MANAGEMENT

The Association's objectives when managing capital are to safeguard the Association's ability to continue as a going concern in order to carry out its principal activities. The Association's overall strategy remains unchanged from prior year.

In order to maintain or adjust the capital structure, the Association may appeal for donations from the general public.

12. FINANCIAL INSTRUMENTS
The company has classified its financial assets and financial liabilities in the following categories:

	2023 HK\$	2022 HK\$
Financial assets at amortised costs		
Loan and receivables		
Deposit and prepayment	2,000.00	2,000.00
Accounts receivable	500.00	-
Cash and bank balances	11,680,862.07	10,375,546.13
Financial liabilities at amortised costs		
Accounts payable	526.00	391.60
Receipts in advance	600.00	32,000.00
	1,126.00	32,391.60

All financial instruments are carried at amounts not materially different from their fair values as at 31 March 2023.

The Association is exposed to credit risk, liquidity risk and currency risk arising in the normal course of its business and financial instruments. The association's risk management objectives, policies and processes mainly focus on minimising the potential adverse effects of these risks on its financial performance and position by closely monitoring the individual exposure.

- 13 -

香港失明人互聯會
HONG KONG FEDERATION OF THE BLIND
NOTES TO THE FINANCIAL STATEMENTS
FOR THE YEAR ENDED 31 MARCH 2023

12. FINANCIAL INSTRUMENTS (CONTD)
a) Credit risk
Credit risk is the risk that a party to a financial instrument will cause a financial loss for the Company by failing to discharge an obligation.

Carrying amounts of financial assets as at reporting date, which represented the amounts of maximum exposure to credit risks, were as follows :-

	2023 HK\$	2022 HK\$
Deposit and prepayment	2,000.00	2,000.00
Accounts receivables	500.00	-
Cash and bank balances	11,680,862.07	10,375,546.13
	11,683,362.07	10,375,546.13

The Company's credit risk is primarily attributable to cash and cash equivalents. The Company's cash and cash equivalents were held by major financial institutions located in Hong Kong which the management believes are of high credit quality. Accordingly, the overall credit risk is considered limited.

b) Liquidity risk

Liquidity risk is the risk that the Company will encounter difficulty in meeting obligations associated with financial liabilities. The Company manages liquidity risks by monitoring its liquidity position through periodic preparation of cash flows and cash balances forecasts and periodic evaluation of the ability of the Company to meet its financial obligations.

Maturities of the financial liabilities of the Company as at reporting date were as follows :-

Total amounts of contractual undiscounted obligations :-	2023 HK\$	2022 HK\$
Accounts payables	526.00	391.60
Receipts in advance	600.00	32,000.00
Due for payment:-		
Within one year or on demand	1,126.00	32,391.60

As the Company maintains sufficient liquid funds, the liquidity risk is considered limited.

c) Interest rate risk

Interest rate risk is the risk that the fair value or future cash flows of a financial instrument will fluctuate because of changes in market interest rates.

The Company is exposed to interest-rate risk which is attributable to the Company's cash and cash equivalents held with financial institutions. The risk is considered limited as the range of interest rates fluctuation is not significant.

- 14 -

香港失明人互聯會
HONG KONG FEDERATION OF THE BLIND
NOTES TO THE FINANCIAL STATEMENTS
FOR THE YEAR ENDED 31 MARCH 2023

12. FINANCIAL INSTRUMENTS (CONTD)

d) Price risk

Market price risk is the risk that the fair value or future cash flows of a financial instrument traded in the market will fluctuate because of changes in market prices.

As at reporting date, the company did not have financial assets exposed to market price risks.

e) Currency risk

Currency risk is the risk that the fair value or future cash flows of a financial instrument will fluctuate because of changes in foreign exchange rates.

The Company's exposure to foreign currency risk arises mainly from certain bank deposits together with interest accrued thereon which are denominated in foreign currencies.

Carrying amounts of financial assets and financial liabilities as at reporting date that exposed to currency risks were as follows:

	2023 HK\$	2022 HK\$
Cash at bank - USD	5,835,809.70	3,791,834.87
Should Hong Kong dollars had strengthened/weakened 1% against United States Dollars, the surplus for the year ended 31 March 2023 would be decreased/increased by HK\$74,800.00(2022: HK\$48,800.00).		

11. COMPARATIVE FIGURES

Certain comparative figures have been reclassified to conform with the current year's presentation.

- 15 -

(for management information purposes only)
香港失明人互聯會
HONG KONG FEDERATION OF THE BLIND
FSA SERVICES
DETAILED STATEMENT OF PROFIT OR LOSS
FOR THE YEAR ENDED 31 MARCH 2023

	2023 HK\$	2022 HK\$
REVENUE		
Government subvention	3,949,598.00	3,896,345.00
Less: rent and rates, and surplus repaid to S.W.D	(1,454.00)	(4,555.00)
Less: programme assistants repaid to S.W.D	-	-
Lottery fund	3,948,144.00	3,891,790.00
Specific grants and donations	59,000.00	59,000.00
Community chest	631,067.00	865,152.16
Activities income	355,600.00	355,600.00
Membership fee	122,371.00	18,660.00
Rental and rates	13,169.00	19,040.00
	7,345.00	7,345.00
	5,136,696.00	5,216,587.16
OTHER REVENUE		
Bank interest received	1,690.48	527.32
Sundry income	5,138,386.48	5,217,114.48
ADMINISTRATIVE EXPENSES		
Advertising	2,531.60	-
Audit fee	13,000.00	13,000.00
Bank charges	252.00	-
Depreciation	-	-
Electricity and water	28,085.72	29,353.00
Government rent, rates and management fee	6,566.00	6,977.00
Insurance	20,005.16	17,869.32
Mandatory provident fund	222,543.70	227,849.59
Medical	21,139.40	31,940.00
Postage and stamp	577.00	110.00
Printing and stationery	12,945.00	17,321.20
Professional fee	3,000.00	5,000.00
Refund to Government	353,120.44	64,711.00
Repairs and maintenance	24,512.30	27,277.00
Specific activities expenses	989,696.52	870,649.90
Staff salaries	3,569,250.88	3,665,504.80
Staff welfare	1,000.00	3,251.00
Subscription	3,500.00	2,330.00
Sundry expenses	6,056.70	1,973.50
Telephone, fax and broadband	39,099.00	32,699.00
Travelling	4,802.60	6,177.75
	5,321,684.02	5,024,194.06
SURPLUS FOR THE YEAR	(183,297.54)	192,920.42

(for management information purposes only)
香港失明人互聯會
HONG KONG FEDERATION OF THE BLIND
NON-FSA SERVICES
DETAILED STATEMENT OF PROFIT OR LOSS
FOR THE YEAR ENDED 31 MARCH 2023

	2023 HK\$	2022 HK\$
REVENUE		
Specific grants and donations	3,247,624.12	1,525,509.30
Foundation fee income	220.00	320.00
Flag day income	-	-
Activities income	2,664.00	-
	3,250,508.12	1,525,829.30
OTHER REVENUE		
Bank interest received	58,847.70	38,007.54
Sundry income	230.00	-
	3,309,585.82	1,563,836.84
ADMINISTRATIVE EXPENSES		
Activities expenses	-	29,689.86
Bank charges	1,350.00	450.00
Mandatory provident fund	61,364.18	61,071.70
Medical	18,211.50	-
Insurance	6,783.08	8,537.29
Professional fee	3,000.00	7,000.00
Specific activities expenses	442,743.93	377,018.85
Staff salaries	1,252,508.45	1,245,589.00
Staff welfare	-	6,938.00
Sundry expenses	354.20	-
Travelling	891.40	-
	1,787,206.74	1,736,314.70
SURPLUS FOR THE YEAR	1,522,379.08	(172,477.86)



港島區賣旗日

本會網站



2024年5月11日(六)

籌款用作

拓展殘疾人士家庭服務 視障人士展才能服務

義工招募熱線 2343 5363

WhatsApp熱線 9448 0141

捐款方法:

- 支票 抬頭「香港失明人互聯會」/
Hong Kong Federation of the Blind
- 捐款戶口 匯豐銀行 151-4-024080
- 捐款電話 2343 5363
- 轉數快/Payme



轉數快



Payme